

FISHWAY STATUS REPORT

Date: 9/19/2015
 Inspection Period: 9/13/2015 thru 9/19/2015

All JD Fishways are inspected twice per day during fish season, Mar. 1 - Nov. 30
 Frequent monitoring of the PLC displays in SMF Fisheries Office as necessary.



JOHN DAY DAM

JD/WC Project-Fisheries
 P.O. Box 823
 Rufus, Oregon 97050
 Phone: 541-506-7860

John Day Dam	Inspections	Criteria	Total Number of Inspections: 14	Temperature: 67 F
	Out of Criteria	Limit		Secchi: 6.0 Ft.
NORTH FISHWAY			4 out of 6 AWS pumps available since 12/23/14	
Exit differential	0	≤ 0.5'		
Exit Control weirs	0	High setting	High setting is normal for JDN	
Count station differential	0	≤ 0.3'		
Weir crest depth (DS gauge)	0	1.0' ± 0.1'		
Entrance differential	0	1.0' - 2.0'	AVG 1.5	
SOUTH FISHWAY			3 AWS Turbines in regular service since 2/28/15	
Exit differential	0	≤ 0.5'		
Exit Control weirs	0	Mid Setting	Mid setting is normal for JDS	
Count station differential	0	≤ 0.3'		
Weir crest depth (US gauge)	0	1.0' ± 0.1'		
South entrance differential	0	1.0' - 2.0'	AVG 1.4	
Entrance weir SE1	0	depth (≥ 8')	AVG 9.8	
Collection channel velocity	0	1.5 - 4 fps	AVG 3.07	
N. Entrance PH(Bay 19)differential	0	1.0' - 2.0'	AVG 1.4	
Entrance weir NE1	0	depth (≥ 8')	AVG 8.5	
Entrance weir NE2	0	depth (≥ 8')	AVG 8.6	
JUVENILE PASSAGE			2015 SMF sampling season ended by 9/15; the facility will continue in bypass through 11/24	
Forebay/bypass conduit differential	0	4.0' - 5.0'	AVG 4.6	
Submersible traveling screens	0	visual inspect	Camera device failed on 8/19; unable to complete August STS inspections	
Turbine trashrack drawdown	0	<1.5', wkly	Monthly MU trashracks' raking is scheduled for the week of 9/24.	
Vert barrier screen drawdown	0	<1.5', wkly		
Spill volume	0	Bay2 &1.6K	Spill season ended on 9/1. Bay 2 open at 1.6 K for JDN attraction, daylight hours only	
Spill pattern	0	per FPP		
Turbine Unit Priority	0	per FPP		
Turbine 1% Efficiency	0	per FPP		

SMOLT MONITORING FACILITY

Operation:

Sampling season ended on 9/15; SMF will continue in bypass for the full flow PIT tags detections until 24 November.

JD Fisheries crew works an abbreviated 18 hrs/7 swing shift schedule as required by FPP.

NO mortalities (0.00%) in the SMF samples by PSMFC since 7/12.

Debris load: very little debris.

Maintenance:

PDS screen cleaners repaired & returned to service on 9/15/15.

Research:

None

Fallbacks: AVG: MAX: 0 MIN: 0

OTHER JOHN DAY ISSUES:

Birds :

see the Avian Numbers tab. We report all species and locations, but in reality only gulls in the tailrace BRZ are relevant at JD.

After a peak of White Pelicans in early to mid August, their JD tailrace BRZ's presence is occasional and minimal (a high number of WP still present on the island downstream.) A relatively low number of gulls after the end of spill season as well; mostly flying/exploring the vicinity of JD without much feeding.

Avian Lines 52 snapped on approx. 8/28/15. Avian line #45 broke on 8/2/15 Total snapped lines = 9 ---- 116 lines remain

The following avian lines have snapped this season and are out of commission: 44, 45, 46, 52, 55, 56, and 60.

(lines 25 and 26 have been out of commission since 2013). Planning to replace by a contract in September/October.

Operations:

MU16 scroll case was successfully dewatered on 9/16 PM. Six small (less than 1 foot) sturgeon mortalities were found on the drain's grating. Additionally, 45 live sturgeon (most 2 to 4 feet in length) were found/salvaged and released into forebay in excellent condition. The entire sturgeon salvage operation lasted only 30 minutes due to a great participation & assistance provided by JD Structural crew of 4.

JD North Fishway in regular service; 5 out of 6 AWS pumps are available. Repair work on pump 4 continues; pump 3 has vibration issues and should be the last last in service.

JD South Fishway in regular service with 3 AWS Turbines; it is meeting the optimal FPP criteria.

Unable to complete the August STS inspection due to the failed camera device. Repairs underway.

MU Gatewell Drawdowns: Differentials are checked Wednesdays and Sundays; all gatewells were in criteria.

Maintenance:

Underwater STS camera device failed on 8/19 ; it is being repaired by JD Electrical.

JD North AWS pumps: four out of total six are available. Repair of AWS pump # 4 by a contractor started on 1/26 & is ongoing.

Calibration: All gauges/ sensors are within the criteria of 0.3' .

Research:

2015 Adult Fish Counting by Normandeau Associates commenced on 1 April, 2015 and will continue daily through 1 November.

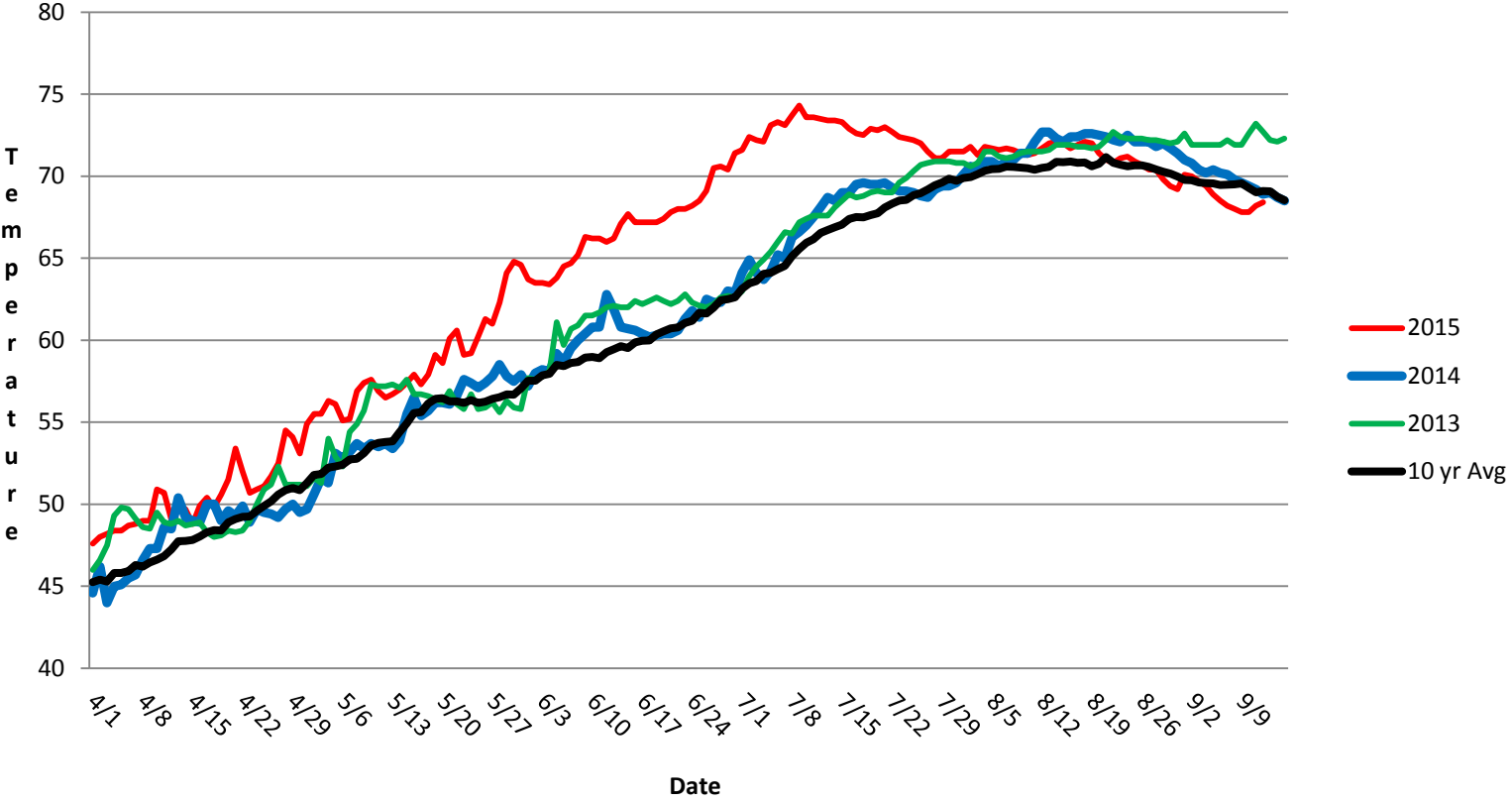
U of I adult lamprey collection/ PIT tagging continues through 9/24. 331 lamprey have been tagged and released into SNR (upstream of ICH) so far this year.

Dam angling to remove NPM from JD PH tailrace, by a crew from Washington F&W underway. 2,808 season total as of 8/31/15.

Proposal by PSMFC to install Adult PIT antennas at both JD Fishways is pending; possible installation during the next winter maintenance season 2015/16.

JD North LPS' monitoring season ended on 9/17; LPS was shut down and dewatered that day.

JDA SMF Water Temp



JDA Collection Channel Velocity

Date	<i>9-Sep-15</i>
By:	<i>pete</i>

Bay(s)	Time	Sec.	Velocity (f/s)
<i>0-2</i>	<i>1:32</i>	<i>92</i>	<i>1.96</i>
<i>2 - 4</i>	<i>2:26</i>	<i>146</i>	<i>3.33</i>
<i>4 - 6</i>	<i>3:23</i>	<i>203</i>	<i>3.16</i>
<i>6 - 8</i>	<i>4:21</i>	<i>261</i>	<i>3.10</i>
<i>8 - 10</i>	<i>5:22</i>	<i>322</i>	<i>2.95</i>
<i>10 - 12</i>	<i>6:20</i>	<i>380</i>	<i>3.10</i>
<i>12 - 14</i>	<i>7:26</i>	<i>446</i>	<i>2.73</i>
<i>14 - 16</i>	<i>8:27</i>	<i>507</i>	<i>2.95</i>
<i>16 - 18</i>	<i>9:08</i>	<i>548</i>	<i>4.39</i>
			3.07

JDA Bird Counts: 9/13/15 to 9/19/15

F(1): Forage AM survey F(2): Forage PM Survey NF(1): Non-Forage AM Survey NF(2): Non-Forage PM Survey

Date	Zone	Gulls				Cormorant				Caspian tern				White Pelican				Grebe				Total
		F(1)	F(2)	NF(1)	NF(2)	F(1)	F(2)	NF(1)	NF(2)	F(1)	F(2)	NF(1)	NF(2)	F(1)	F(2)	NF(1)	NF(2)	F(1)	F(2)	NF(1)	NF(2)	
13-Sep	PHFB	0	0	75	25	0	0	0	0	0	0	0	0	0	0	0	0	0	0	0	0	100
13-Sep	SWFB	0	0	0	0	0	0	0	0	0	0	0	0	0	0	0	0	0	0	0	0	0
13-Sep	PH1	7	0	0	0	3	0	0	0	0	0	0	0	0	0	0	0	0	0	0	0	10
13-Sep	PH2	0	0	0	0	0	0	0	0	0	0	0	0	0	0	0	0	0	0	0	0	0
13-Sep	PH3	0	0	0	0	0	0	0	0	0	0	0	0	0	0	0	0	0	0	0	0	0
13-Sep	SW1	0	0	0	0	0	0	0	0	0	0	0	0	0	0	0	0	0	0	0	0	0
13-Sep	SW2	0	0	0	0	0	0	0	0	0	0	0	0	0	0	0	0	0	0	0	0	0
13-Sep	SW3	0	0	0	0	0	0	22	0	0	0	0	0	0	0	0	0	0	0	0	0	22
Avg/Survey		4		50		2		11		0		0		0		0		0		0		132
14-Sep	PHFB	0	0	13	2	0	0	0	0	0	0	0	0	0	0	0	0	8	5	30	16	74
14-Sep	SWFB	0	0	0	0	0	0	0	0	0	0	0	0	0	0	0	0	0	0	0	0	0
14-Sep	PH1	2	21	0	0	2	1	0	0	0	0	0	0	0	0	0	0	0	0	0	0	26
14-Sep	PH2	2	0	0	0	0	0	0	0	0	0	0	0	0	0	0	0	0	0	0	0	2
14-Sep	PH3	2	0	0	0	0	0	0	0	0	0	0	0	0	0	0	0	0	0	0	0	2
14-Sep	SW1	0	0	0	0	0	1	0	0	0	0	0	0	0	0	0	0	0	0	0	0	1
14-Sep	SW2	0	0	0	0	0	0	0	0	0	0	0	0	0	0	0	0	0	0	0	0	0
14-Sep	SW3	0	0	0	0	0	0	0	0	0	0	0	0	0	0	0	0	0	0	0	0	0
Avg/Survey		14		8		2		0		0		0		0		0		7		23		105
15-Sep	PHFB	0	0	0	22	0	0	0	16	0	0	0	0	0	0	0	0	0	0	0	0	38
15-Sep	SWFB	0	0	38	42	0	0	3	0	0	0	0	0	0	0	0	0	0	0	0	0	83
15-Sep	PH1	0	14	0	0	0	0	0	0	0	0	0	0	0	0	0	0	0	0	0	0	14
15-Sep	PH2	0	0	0	0	0	0	0	0	0	0	0	0	0	0	0	0	0	0	0	0	0
15-Sep	PH3	0	1	0	0	0	0	0	0	0	0	0	0	0	0	0	0	0	0	0	0	1
15-Sep	SW1	0	0	0	0	2	2	0	0	0	0	0	0	0	0	0	0	0	0	0	0	4
15-Sep	SW2	0	0	0	0	0	0	0	3	0	0	0	0	0	0	0	0	0	0	0	0	3
15-Sep	SW3	2	3	0	0	0	0	0	0	0	0	0	0	0	0	0	0	0	0	0	0	5
Avg/Survey		10		51		2		11		0		0		0		0		0		0		148
16-Sep	PHFB	0	0	0	0	0	0	9	4	0	0	0	0	0	0	0	0	0	0	0	0	13
16-Sep	SWFB	0	0	108	0	0	0	37	0	0	0	0	0	0	0	0	0	0	0	0	0	145
16-Sep	PH1	0	0	0	0	11	2	0	0	0	0	0	0	0	0	0	0	0	0	0	0	13
16-Sep	PH2	0	0	0	0	0	0	0	0	0	0	0	0	0	0	0	0	0	0	0	0	0
16-Sep	PH3	0	0	0	0	0	0	0	0	0	0	0	0	0	0	0	0	0	0	0	0	0
16-Sep	SW1	0	0	0	0	0	0	0	0	0	0	0	0	0	0	0	0	0	0	0	0	0
16-Sep	SW2	0	0	0	0	0	0	2	0	0	0	0	0	0	0	0	0	0	0	0	0	2
16-Sep	SW3	3	4	0	0	0	0	0	0	0	0	0	0	0	0	0	0	0	0	0	0	7
Avg/Survey		4		54		7		26		0		0		0		0		0		0		180

JDA Bird Counts: 9/13/15 to 9/19/15

F(1): Forage AM survey F(2): Forage PM Survey NF(1): Non-Forage AM Survey NF(2): Non-Forage PM Survey

Date	Zone	Gulls				Cormorant				Caspian tern				White Pelican				Grebe				Total
		F(1)	F(2)	NF(1)	NF(2)	F(1)	F(2)	NF(1)	NF(2)	F(1)	F(2)	NF(1)	NF(2)	F(1)	F(2)	NF(1)	NF(2)	F(1)	F(2)	NF(1)	NF(2)	
17-Sep	PHFB	0	0	0	24	0	0	0	0	0	0	0	0	0	0	0	0	0	0	0	17	41
17-Sep	SWFB	0	0	0	0	0	0	0	0	0	0	0	0	0	0	0	0	0	0	0	0	0
17-Sep	PH1	0	6	0	0	0	0	0	0	0	0	0	0	0	0	0	0	0	0	0	0	6
17-Sep	PH2	0	19	0	0	0	0	0	0	0	0	0	0	0	0	0	0	0	0	0	0	19
17-Sep	PH3	0	0	0	0	0	0	0	0	0	0	0	0	0	0	0	0	0	0	0	0	0
17-Sep	SW1	0	0	0	0	0	0	0	0	0	0	0	0	0	0	0	0	0	0	0	0	0
17-Sep	SW2	0	0	0	0	0	0	0	0	0	0	0	0	0	0	0	0	0	0	0	0	0
17-Sep	SW3	0	0	0	0	0	0	0	9	0	0	0	0	0	0	0	0	0	0	0	0	9
Avg/Survey		13		12		0		5		0		0		0		0		0		9		75
18-Sep	PHFB	0	0	0	0	0	0	0	0	0	0	0	0	0	0	0	0	0	0	16	0	16
18-Sep	SWFB	0	0	66	0	0	0	24	0	0	0	0	0	0	0	0	0	0	0	0	0	90
18-Sep	PH1	2	1	0	0	0	1	0	0	0	0	0	0	0	0	0	0	0	0	0	0	4
18-Sep	PH2	0	1	0	0	1	0	0	0	0	0	0	0	0	0	0	0	0	0	0	0	2
18-Sep	PH3	4	0	0	0	0	0	0	0	0	0	0	0	0	0	0	0	0	0	0	0	4
18-Sep	SW1	0	0	0	0	0	0	0	1	0	0	0	0	0	0	0	0	0	0	0	0	1
18-Sep	SW2	0	0	0	0	0	0	0	16	0	0	0	0	0	0	0	0	0	0	0	0	16
18-Sep	SW3	0	0	12	0	0	0	0	11	0	0	0	0	0	0	0	0	0	0	0	0	23
Avg/Survey		4		39		1		26		0		0		0		0		0		8		156
19-Sep	PHFB	0	0	67	0	0	0	17	0	0	0	0	0	0	0	0	0	0	0	25	17	126
19-Sep	SWFB	0	0	0	0	0	0	0	0	0	0	0	0	0	0	0	0	0	0	0	0	0
19-Sep	PH1	0	2	0	0	0	3	0	0	0	0	0	0	0	0	0	0	0	0	0	0	5
19-Sep	PH2	0	0	0	0	0	0	0	0	0	0	0	0	0	0	0	0	0	0	0	0	0
19-Sep	PH3	0	3	0	0	0	0	0	0	0	0	0	0	0	0	0	0	0	0	0	0	3
19-Sep	SW1	0	0	0	0	0	0	0	0	0	0	0	0	0	0	0	0	0	0	0	0	0
19-Sep	SW2	0	0	0	0	0	0	2	0	0	0	0	0	0	0	0	0	0	0	0	0	2
19-Sep	SW3	0	0	0	7	1	0	0	9	0	0	0	0	0	0	0	0	0	0	0	0	17
Avg/Survey		3		37		2		14		0		0		0		0		0		21		153
Totals	Gulls				Cormorant				Caspian tern				White Pelican				Grebe				Total	
	F		NF		F		NF		F		NF		F		NF		F		NF			
Weekly Total	99		501		30		185		0		0		0		0		13		121		949	
Avg/Survey	7		36		2		13		0		0		0		0		1		9		68	

John Day Dam
Avian Zones



John Day Weekly Averages

	Temp:	Secchi:	Fallbacks
Sun	67	6.0	
Mon	67	6.0	
Tues	67	6.0	
Wed	67	6.0	
Thur	67	6.0	
Fri	67	6.0	
Sat	67	6.0	
AVG:	67	AVG: 6.0	AVG
			MAX 0
			MIN 0

	NE1	NE2	S.Ent	SE1	N.Ent	JBS Diff	Bay19
Sun	8.4	8.5	1.5	9.6	1.5	4.5	1.2
Sun	8.2	8.2	1.5	9.5	1.6	4.5	1.3
Mon	8.0	8.0	1.4	9.4	1.7	4.6	1.4
Mon	8.4	8.4	1.4	8.5	1.6	4.5	1.5
Tues	8.6	8.6	1.5	9.2	1.5	4.5	1.6
Tues	8.8	8.8	1.3	9.3	1.5	4.6	1.5
Wed	8.6	8.6	1.3	9.2	1.5	4.5	1.6
Wed	8.5	8.5	1.5	8.5	1.5	4.6	1.2
Thur	8.4	8.4	1.4	8.9	1.6	4.5	1.6
Thur	8.9	8.9	1.7	8.6	1.4	4.6	1.3
Fri	8.6	8.6	1.6	8.5	1.6	4.6	1.3
Fri	9.0	9.0	1.3	19.1	1.5	4.5	1.2
Sat	8.7	8.7	1.4	9.3	1.5	4.6	1.4
Sat	8.5	8.5	1.3	8.9	1.5	4.5	1.4
AVG:	8.5	8.6	1.4	9.8	1.5	4.5	1.4